

PROFIPRINT...

REA VERIFIER

QUALITY CONTROL DEVICES
FOR MATRIX- AND BARCODES

REA VeriCube
Quality Control Device
For 2D Matrix- and Barcodes



REA VeriCube

The REA VeriCube is a state-of-the-art matrix and barcode verification device which can be used across all industry sectors. Whether lying, standing or from top to bottom, virtually any test sample can be measured contact-free in the optimum measuring position.

The measurement of optical codes in compliance with defined angles, distances and lighting allows accurate and reproducible measurement results and quality evaluations.

The measuring system is based on a high-precision optical module with a CMOS camera chip. The system is designed to avoid ambient light influences during the measurement process.

Features

- Contact-free measurements by a CMOS camera
- Easy exchangeable camera modules to adapt to different code sizes
- Selectable illumination (red or white light)
- Capable of measuring DPM codes (direct part marking)
- Designed to operate in 3 positions to meet different measuring requirements: sidewise, in upright position and upside down
- Darkened measuring chamber to avoid ambient light influences
- Verification according to ISO/IEC 15415 for printed matrix codes
- Verification according to ISO/IEC TR 29158 (formerly AIM DPM guideline 2006) for direct part marking matrix codes
- Verification according to ISO/IEC 15416 or ANSI X3.182 for barcodes
- Verification in compliance with GS1 specifications
- Verification of GS1-128 data structures
- Verification of optional parameters for optimizing the print process
- Multilingual user interface and reports
- For ease of use, settings can be stored in customized profiles for fast selection
- ISO/IEC 15418 / ANS MH10.8.2 data structure analysis
- Specific code selection to meet the pharmaceutical industry demands
- Power supply via network cable (Power over Ethernet)
- Easy removable and exchangeable transparent cover plate
- Network-compatible PC evaluation software TransWin32 for Windows (multi user capable)

The measured values are transmitted via a standard network interface to a PC with REA TransWin32 evaluation software installed.

The verification system consists of the measuring head, an optical module with a wide measuring range to choose from and the Windows based PC evaluation software REA TransWin32.

With the REA Verifier VeriCube you can quickly find out how to improve the read rate of the tested codes. Optimize the print quality of your codes by utilizing detailed measurement results.



Symbologies

Matrix Codes (2D):

DataMatrix, DPM-Matrix Codes, QR-Code, MicroQR-Code, Aztec Code, PDF 417, more under development

Barcodes (1D):

EAN-13, UPC-A, UPC-E with/ without ADD-ON, EAN-8, 2/5 Interleaved, ITF-14, Frachtpost, Code 39, PZN-Code, Code 32, Code 128, GS1-Databar, GS1-Databar Composite

Optional Codes:

2/5 3 Bars, 2/5 5 Bars, 2/5 IATA, 2/5 Baggage, 2/5 DHL Express (Frachtpost-Code), Code39 Full ASCII, Code93, MSI, Plessey, Codabar Monarch (18), LAETUS Pharmacode, LAETUS Mini Pharma Code

Data structures and code properties:

- GS1 data structures (GS1 DataMatrix, GS1-QR-Code, GS1-128, GS1 Databar, Composite)
- ISO/IEC 15418 / ANS MH10.8.2 data structures (AIAG, Odette, VDA, EDIFICE, HIBC, DOD, UPU ...)
- EFPIA and PPN support for pharmaceutical industry
- Check digit control settings
- Size control settings
- Customizable date verification

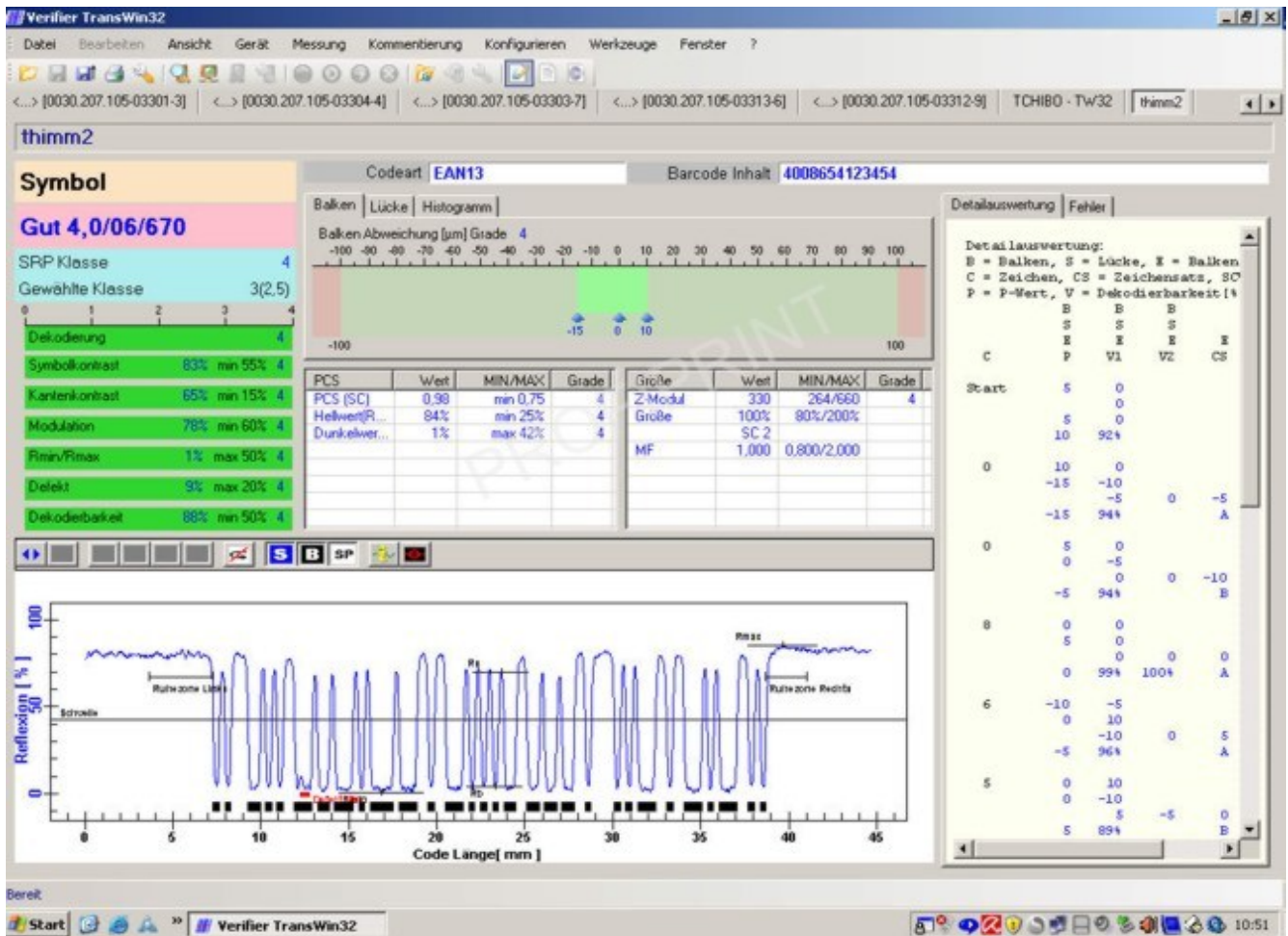
Technical Specifications

Focal length	Field Of View (FOV)	Typical X-dimension	Minimum X-dimension	Pixel size
8 mm	114 x 76 mm	0,44 mm	0,25 mm	44 µm
12 mm	85 x 63,5 mm	0,33 mm	0,19 mm	33 µm
16 mm	63,5 x 47,5 mm	0,25 mm	0,15 mm	25 µm
25 mm	37,5 x 27,7 mm	0,14 mm	0,09 mm	14,5 µm

- Measuring accuracy compliant to ISO/IEC 15426-2 und ISO/IEC 15426-1
- Windows Software TransWin32 included
- Red LED light 660nm or white LED light 4.000 °K
- Illumination angle 45°, red or white light
- Status LEDs for scan and light source selection
- Power supply via PoE (Power over Ethernet)
- Key panel with on/off, Scan and 3 customizable function keys
- Flip key panel to accommodate to preferred measuring position
- RJ45 Ethernet port for TCP/IP communication and PoE Power supply
- Exchangeable camera module, resolution 2592 x 1944 pixel
- Camera focus and aperture pre-adjusted by factory
- Size: 200 x 150 x 150 mm (w/l/h), with key panel 210 mm width
- Weight: 2.600 g
- Windows 7, Windows 8, 32 and 64bit supported



REA VERIFIER



PROFIPRINT..

www.profiprint.cz
 Tel.: +420 541 241 957
 Email: profiprint@profiprint.cz